

Bailey & Mackey Ltd

Type 1381V

This series of pressure switches can be used for all applications where an electrical circuit is required to close or open at a required pressure.

The robustness of this series of pressure switches enables all applications in all industries to be satisfied.

Option V – Adjustable Hysteresis (Reset Differential)

This option enables the hysteresis to be increased and can be varied between approximately 5% and 95% of the adjustable pressure range

- Robust & Reliable
- Diaphragm Operated
- Enclosure Rating IP65
- CE Marked
- LPCB Approved Versions Available
- Fully Adjustable
- Wetted Parts for use with most fluids
- Easily Customised



Mechanical Specifications

Pressures

Pressure Ranges	Hysteresis Typical
-1 to +1 bar	Adjustable
0.2 to 4 bar	Adjustable
0.5 to 11 bar	Adjustable
0.7 to 14 bar	Adjustable
2 to 28 bar	Adjustable
2 to 42 bar	Adjustable

Electrical Ratings

10 Amp at 250V ac 50Hz Inductive Load
1 Amp at 30V dc Inductive Load

For other voltages and currents please consult our Technical Sales Department.

Standard Materials

Diaphragm	Beryllium Copper
Seal	Glass filled PTFE ≤11 Bar Nitrile Rubber >11 Bar
Housing	Aluminium/Zinc Diecast
Cover	Glass filled nylon with Neoprene seal
Base	Brass
Set Point Accuracy	+/- 2%
Temperature Range	-10 to +85°C (Process fluid must not solidify)
Temperature Coefficient	0.05% (of range per 0°C from 20°C)

Further Info

Maximum Pressure

To ensure long service and life select the pressure range as follows:

Dynamic pressure applications $P_{max} = 75\%$ of Range

Static pressure applications $P_{max} = 100\%$ of Range

Maximum Pressure that can be applied is 125% of pressure range

Installation

The Switches can be mounted directly on the connecting thread. Sealing grooves are machined into the end face of the parallel threads for the use with sealing washers. A mounting bracket is available if required.

Vacuum Setting

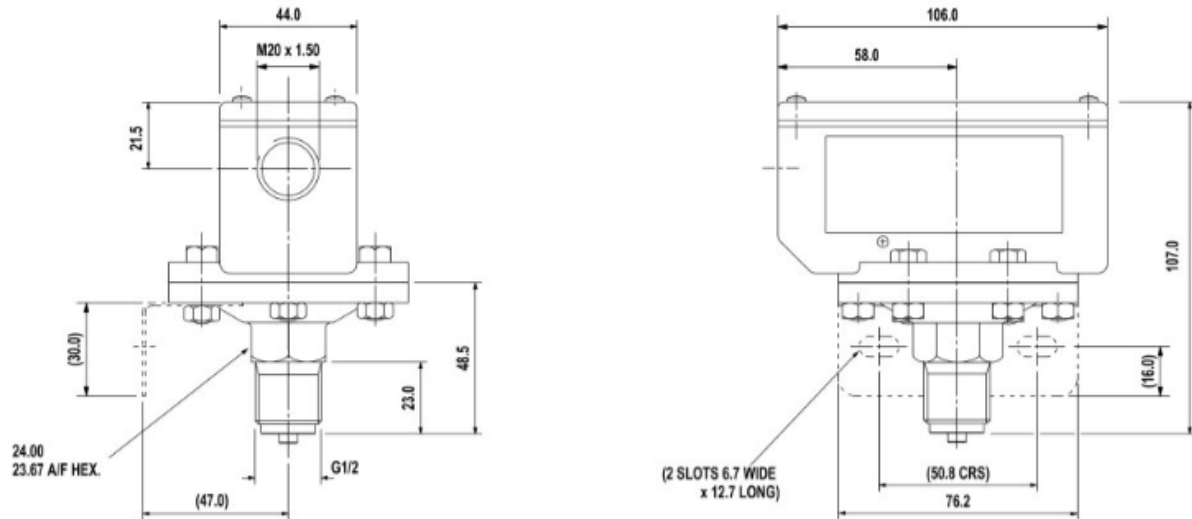
At ambient pressure the switches will be in the operated condition consequently the wiring should be reversed i.e NO becomes NC.

Connecting Threads

All Connecting threads used in industry are available including British, American and metric. Please state the required connection thread when ordering.

Flanged fittings are available and most types of Hygienic fittings can be supplied assembled directly onto the Pressure Switch. If flush diaphragms are required please consult our Technical Sales Department.

Alternative Wetted Parts also available, please contact our Technical Sales Department for options and information on this.



Setting Instructions (Adjustable Differential 'V Type')

1. Rotate Notched wheel clockwise until tight to obtain minimum differential.
2. Set Switch to required operating point.
3. Rotate notched wheel anti-clockwise until required differential is obtained ¼ turn of the notched wheel will give a change in differential of approximately 10% of the range of the switch.
4. During differential adjustment the operating point may vary slightly but can be reset by use of the adjusting nut.

NOTE – If the differential is greater than the operating point the switch will not reset.

